

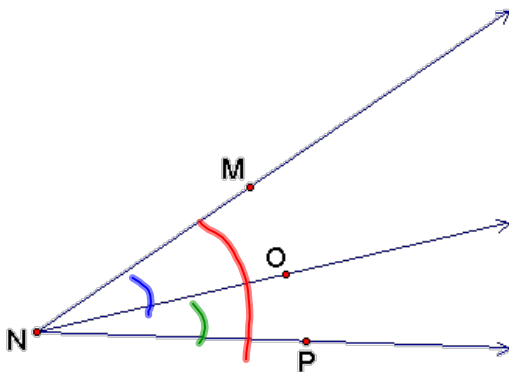
### Warm Up

1. Find  $PR$
- 
- Handwritten work for problem 1:  
 $6x - 11 = 49$   
 $49 \times 2 = 98$   
 $PR = 98$
2. Find the midpoint of  $\overline{AB}$   
 $A(-8, -7)$      $B(11, 5)$
- Handwritten work for problem 2:  
 $6x - 11 = 10x - 51$   
 $-11 = 4x - 51$   
 $40 = 4x$   
 $10 = x$   
 $\div 4$

3. Find the length of  $\overline{AB}$   
 $A(1, 2)$      $B(5, 4)$

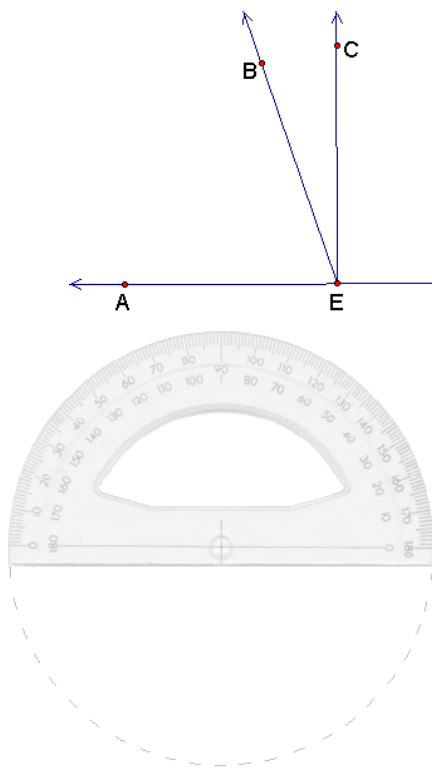
### 1-4 Measure and Classify Angles

Ex. 1 Name three angles in the diagram.



$\angle MNO$   
 $\angle ONP$   
 $\angle MNP$

Ex. 2 Find the measure of each angle, and classify each.



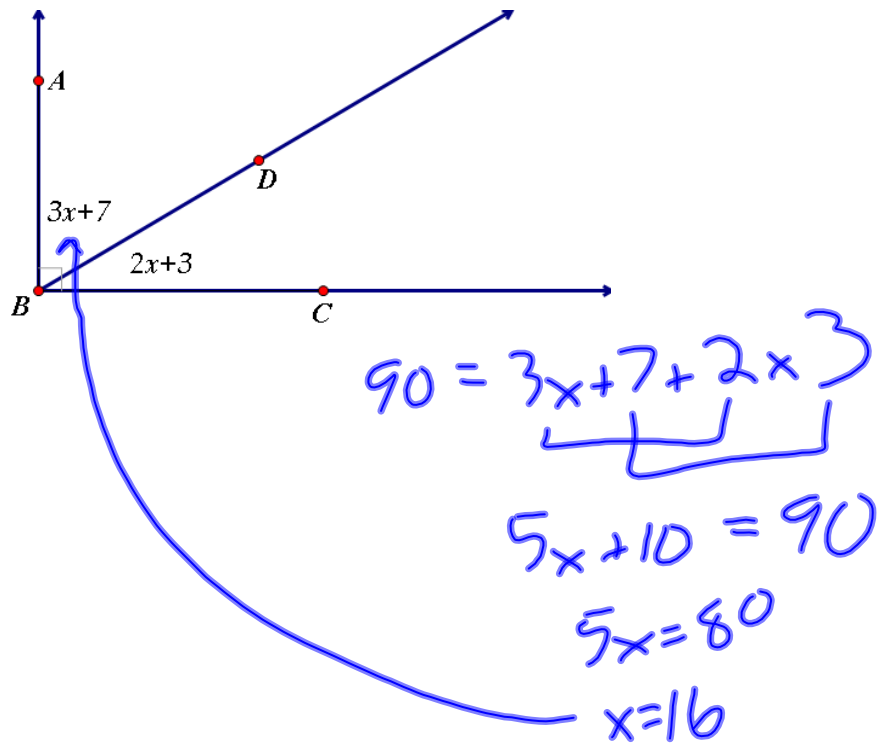
$m\angle AEB = 72^\circ$   
 acute  
 $m\angle CED = 90^\circ$   
 right  
 $m\angle BEC = 18^\circ$   
 acute  
 $m\angle BED = 108^\circ$   
 $m\angle AED = 180^\circ$   
 straight angle

Ex 3 If  $m\angle XYZ = 72^\circ$  find  $m\angle XYW$  and  $m\angle ZYW$

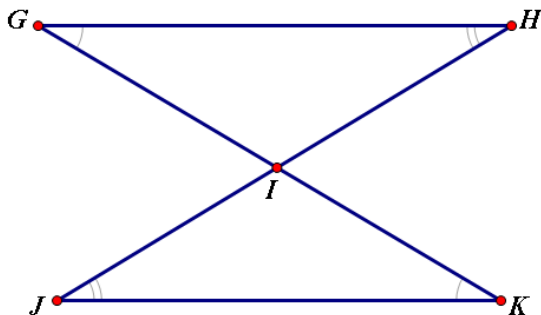
$72 = 2x - 9 + 3x + 6$   
 $72 = 5x - 3$   
 $75 = 5x$   
 $x = 15$

$m\angle XYW = 21^\circ$   
 $m\angle ZYW = 51^\circ$

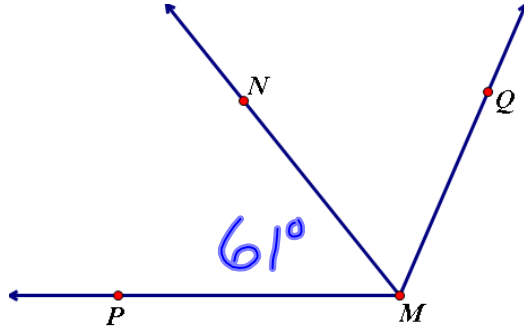
Ex. 4 Find the measure of  $\angle ABD = 55^\circ$



Ex. 5 Identify all pairs of congruent angles.



- Ex. 6 In the diagram,  $\overrightarrow{MN}$  bisects  $\angle PMQ$  and  $m\angle PMQ = 122^\circ$ . Find  $m\angle PMN$



- Ex. 7 Make up a problem similar to #3 and #4 and solve your problem.