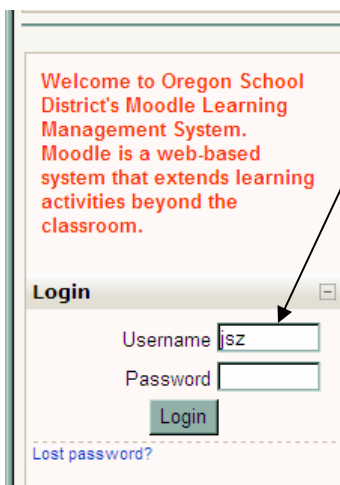




Oregon's Digital Classroom!

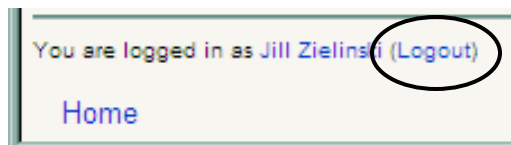
ACCESSING MOODLE SITE FROM SCHOOL

1. Login to Novell
2. Open either Internet Explorer or Mozilla Firefox
3. From the Internal webpage, click on Moodle – moodle.OregonSD.org under the Links heading **or** click on the word Moodle under the graphic in the left column



4. The OSD Moodle Courses listing will appear, on the left side of the screen, under the Login heading enter your Novell username and password and click the login button
5. Upon login you will see the listing of all the OHS courses, click on the name of course
6. A message will appear asking if you would like to become a member of this course, click YES
7. If you are asked for an enrolment key, this is a ONE TIME password needed upon logging into the course for the first time, the key should be given to you by your instructor
8. Follow the additional directions provided by your teacher
9. Click Logout in the upper right corner when finished

Courses	
English 12 - Mr. Tyler	🔑
Schultz Computer Apps 1	🔑 ⓘ
PowerPoint MOS	🔑 ⓘ
Anatomy and Physiology	🔑 ⓘ
Excel MOS	🔑 ⓘ
Fishwild Physics	🔑
Anatomy and Physiology of Machines I	ⓘ
Anatomy and Physiology of Machines II	ⓘ
Anatomy and Physiology of Machines III	ⓘ
Architectural Design	ⓘ
Computer Applications I	ⓘ
Literature Skills	ⓘ



Enrolment Key:

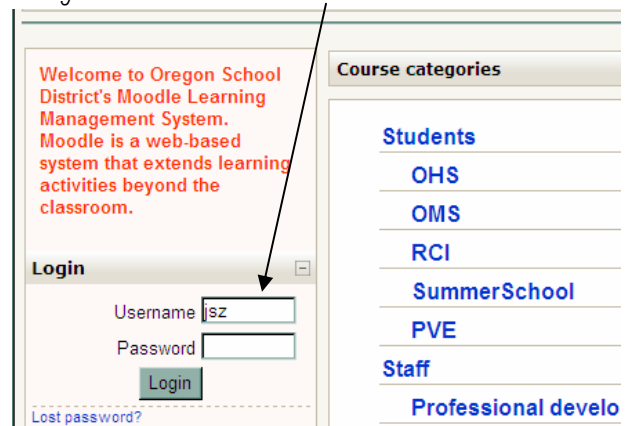
ACCESSING MOODLE FROM HOME

1. Open your web browser
2. Navigate to the Oregon School District website (www.oregonsd.org)
3. Click on *Students* in the Menu across the top of the page

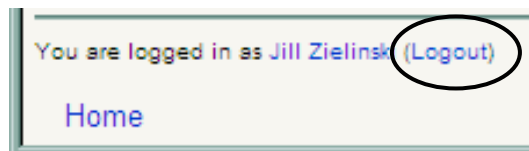


4. Click on the Moodle link
✍ The third link under the *Students* menu
5. The Oregon School District Moodle Page appears, use your Novell username and password to login
6. The listing of possible courses is displayed, click on the name of your course
7. The question about enrolling yourself as a member of the course displays, click Yes

You are about to enrol yourself as a member of this course.
Are you sure you wish to do this?

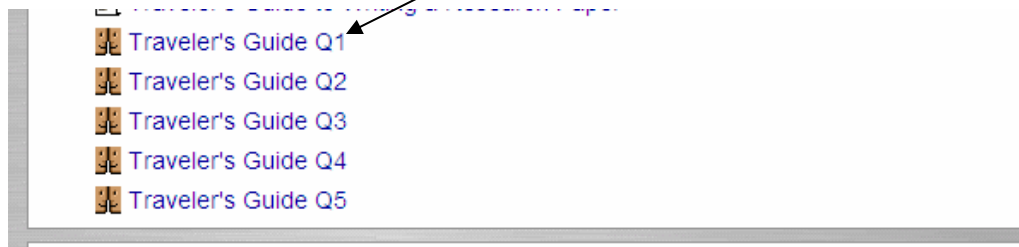
The image shows the Moodle login page. On the left, there is a red welcome message: 'Welcome to Oregon School District's Moodle Learning Management System. Moodle is a web-based system that extends learning activities beyond the classroom.' Below this is a 'Login' section with fields for 'Username' (containing 'jsz') and 'Password', and a 'Login' button. A 'Lost password?' link is at the bottom left. On the right, there is a 'Course categories' sidebar with links for 'Students', 'OHS', 'OMS', 'RCI', 'SummerSchool', 'PVE', 'Staff', and 'Professional develope'. A red arrow points from the text 'click on the Moodle link' to the 'Login' button.

8. If an enrolment key is needed obtain this from your teacher
9. Follow any additional instructions provided by your teacher
10. Click Logout located in the upper right corner when finished

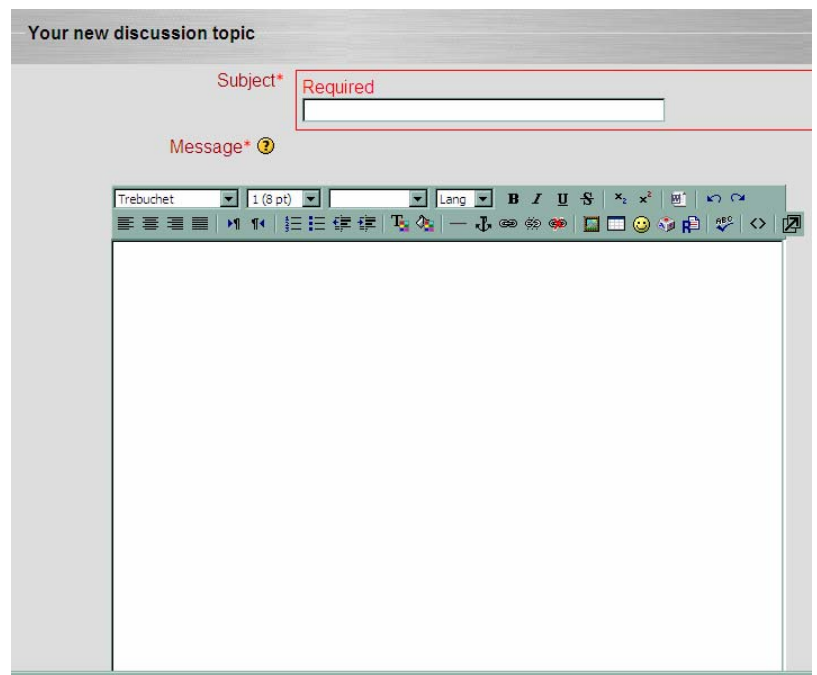


Preventing Copies of Forum Posts Being Sent to Your Email Account

1. Log into Moodle, navigate to the desired course
2. Click on the appropriate forum link in the content section of your course



3. Follow the directions from your teacher about how to respond in a forum (either click the reply button or click on the "Add a new discussion" topic button)
4. Key an appropriate subject and your response in the message textbox provided
5. Underneath the textbox next to the subscription heading click on the dropdown arrow and change it to "I don't want email copies of posts to this forum"



Post to forum

There are required fields in this form marked*.